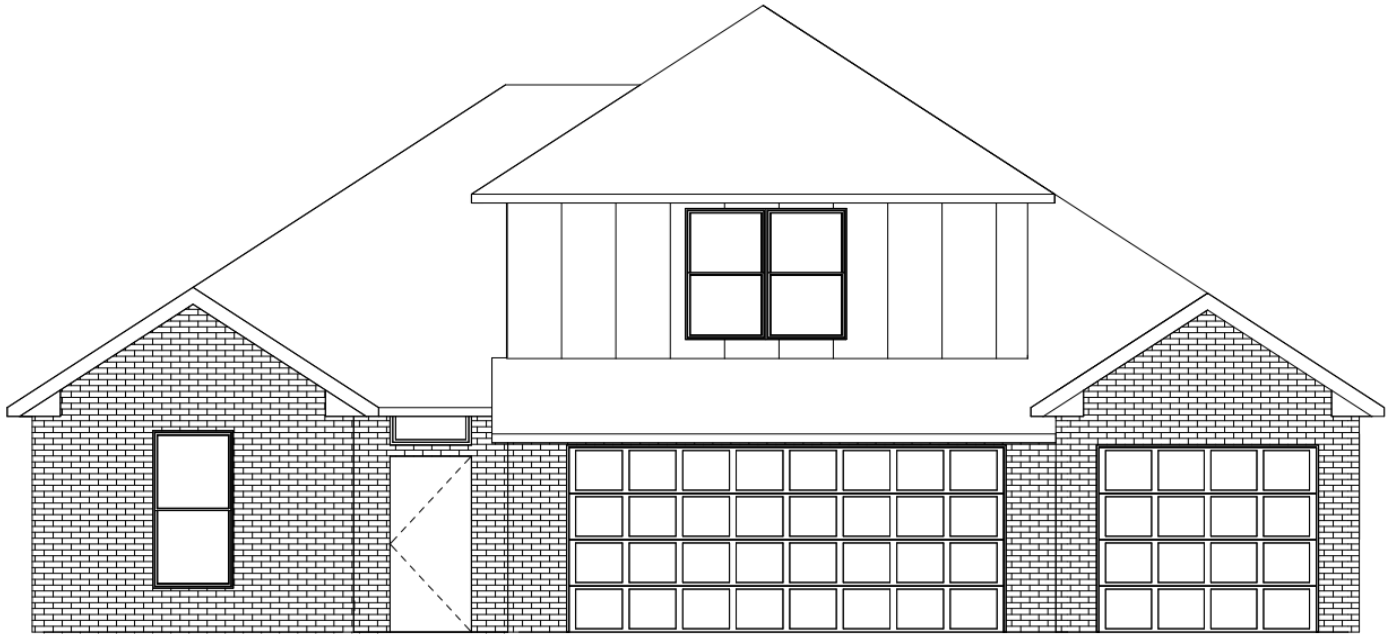


THE HAILEY R2



1,977 SQFT



4 BEDROOM

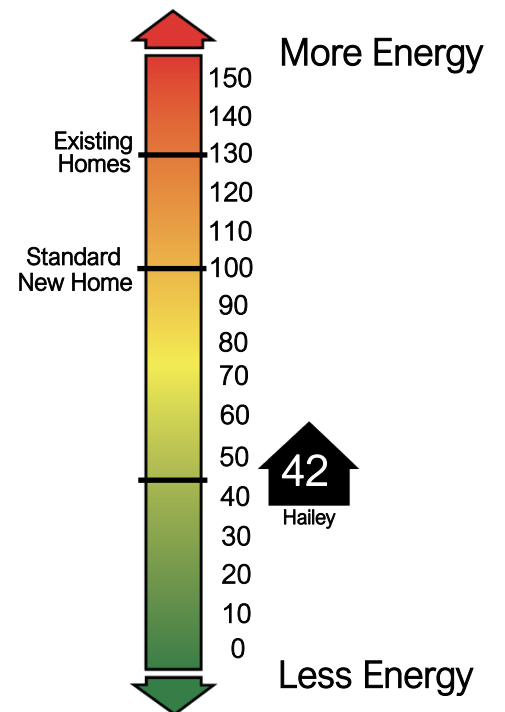


3 BATH



3 CAR

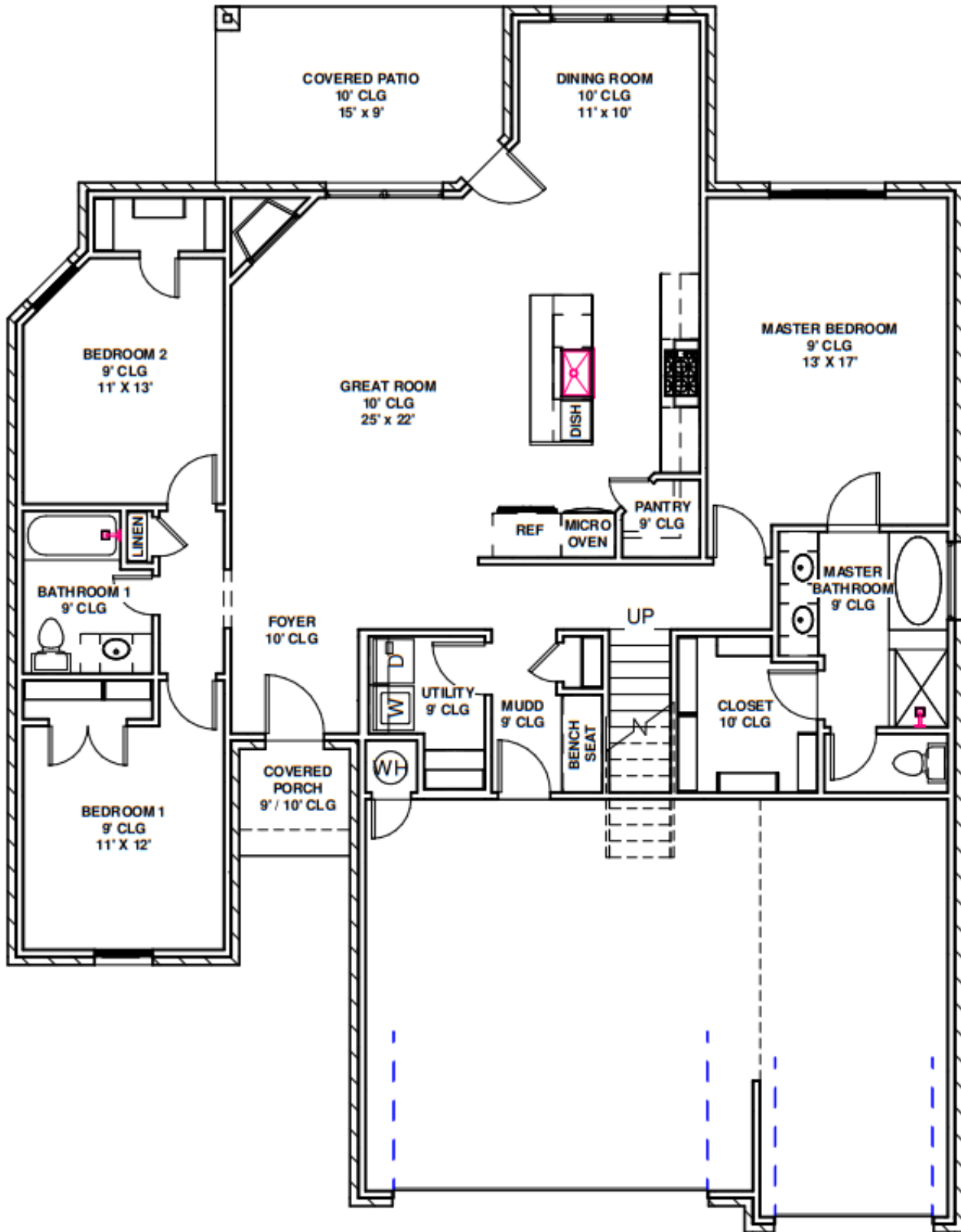
HERS Index



For more information about this plan or other options

CONTACT 405.310.6656

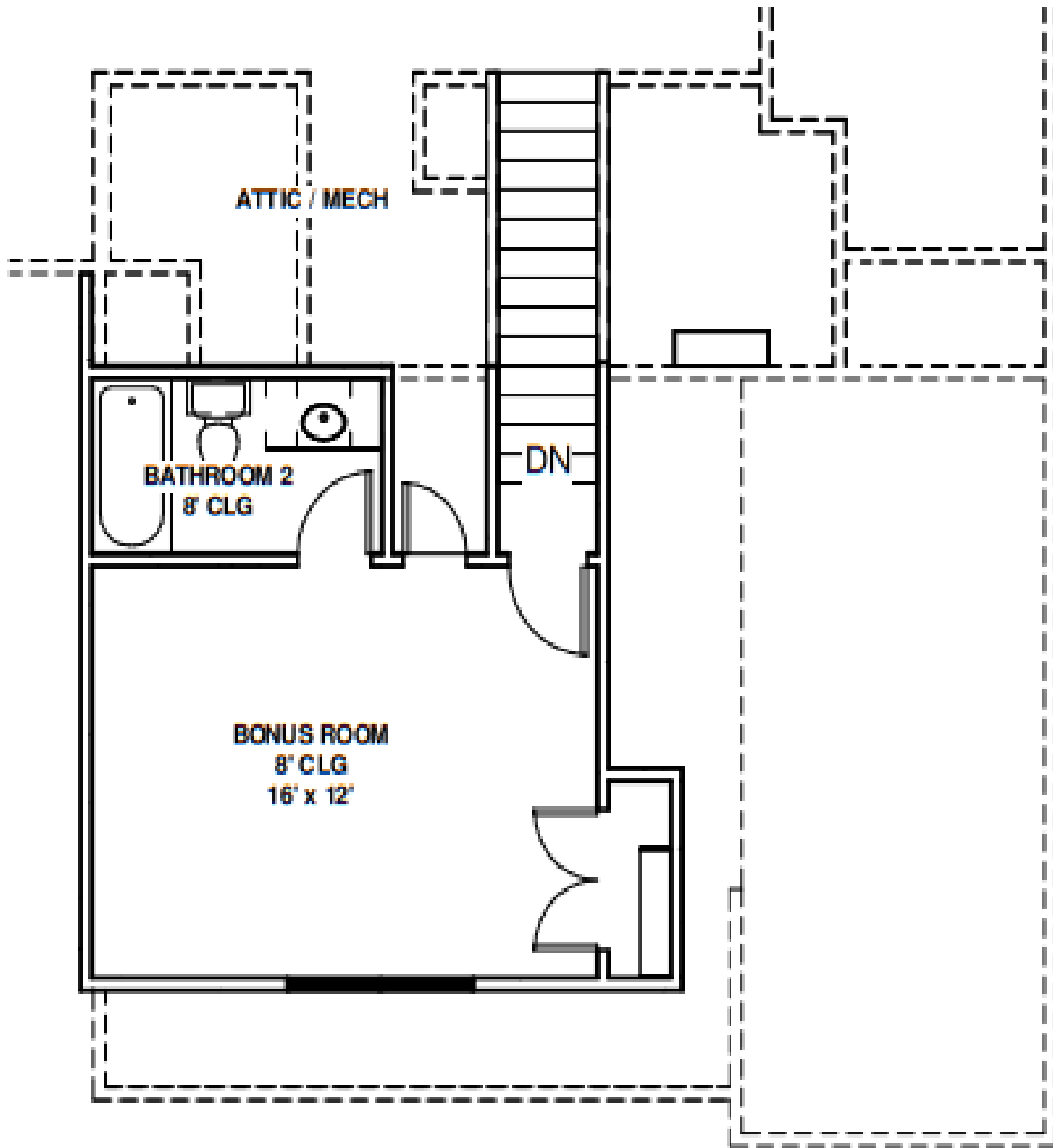




Total Living - 2,169 SQFT Outdoor Living - 192 SQFT Length - 61' - 10"

Plans, specifications, features, and elevations are subjected to change. All dimensions and square footages are approximated. Plans are property of Brookfield Custom Homes LLC, reuse of plan is strictly prohibited.

SALES@BROOKFIELDCUSTOMHOMES.COM / WWW.BROOKFIELDCUSTOMHOMES.COM



Total Living - 2,169 SQFT

Outdoor Living - 192 SQFT

Length - 61' - 10"

Indoor Living - 1,977 SQFT

Garage - 606 SQFT

Width - 49' - 10"

Plans, specifications, features, and elevations are subjected to change. All dimensions and square footages are approximated. Plans are property of Brookfield Custom Homes LLC, reuse of plan is strictly prohibited.

SALES@BROOKFIELDCUSTOMHOMES.COM / WWW.BROOKFIELDCUSTOMHOMES.COM



HAILEY INTERIOR & EXTERIOR FEATURES

INTERIOR

- Eggshell paint throughout
- Custom built cabinetry paint grade
- Custom built hood vent (vented to exterior)
- Stainless steel bowfront kitchen sink
- Soft closing cabinet doors
- Designer cabinet hardware
- Pull-out Trash bin in kitchen
- Custom designed mud bench with hooks
- Optional framed or frameless mirrors
- Tile surface in main living and wet areas
- Carpet in bedrooms and closets
- Upscale plumbing fixtures - choice of finish
- Security system with touch screen keypad
- Monitored smoke and carbon monoxide detector
- LED flush mounts throughout home in specialized areas
- Vent light in owner's suite
- Fans in all the bedrooms and living space
- Undermount porcelain sinks in bathrooms
- Elongated toilet bowls
- Towel rings, tissue holders towel bars and/or robe hooks in all bathrooms

EXTERIOR

- Engineered footing and stem foundation
- Water system - Pex pipe
- Walls at 16" on center
- Structural moisture barrier sheathing
- Smart trim fascia, soffit and siding
- Foil back decking
- 5 zone sprinkler system
- Gas drops located on back patio
- Gutters along A/C, flowerbeds, and front porch
- Back patio fan with light
- Front landscaped yard—per HOA requirements
- Wi-Fi garage door opener
- Carriage, up and down lighting
- Reinforced sidewalks, driveway, and patios

ENERGY EFFICIENCY

- Blown in fiberglass insulation with super seal R-15 walls and R-38 ceilings
- High Efficiency HVAC system
- Vinyl windows - low E 366 with argon glass
- Composition shingles
- Sill sealer at bottom plate
- Caulk all windows, exterior doors, and penetrations
- Install return vent in master bedroom
- Install programmable thermostat