

THE OXFORD



2,668 SQFT



4 BEDROOM



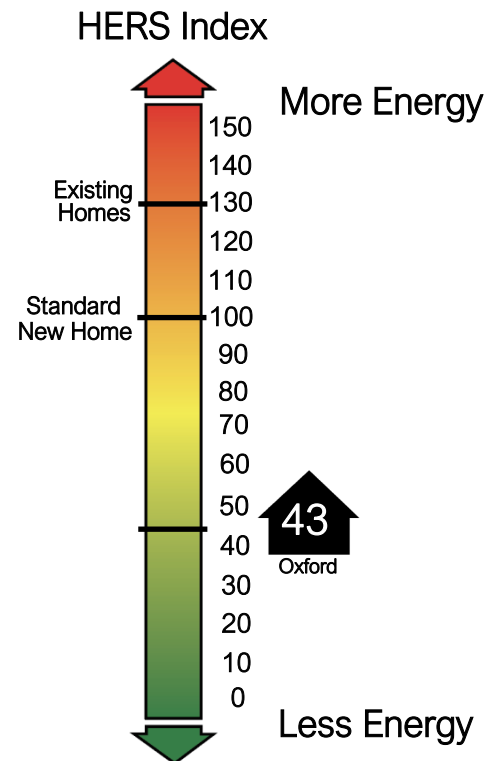
3.5 BATH

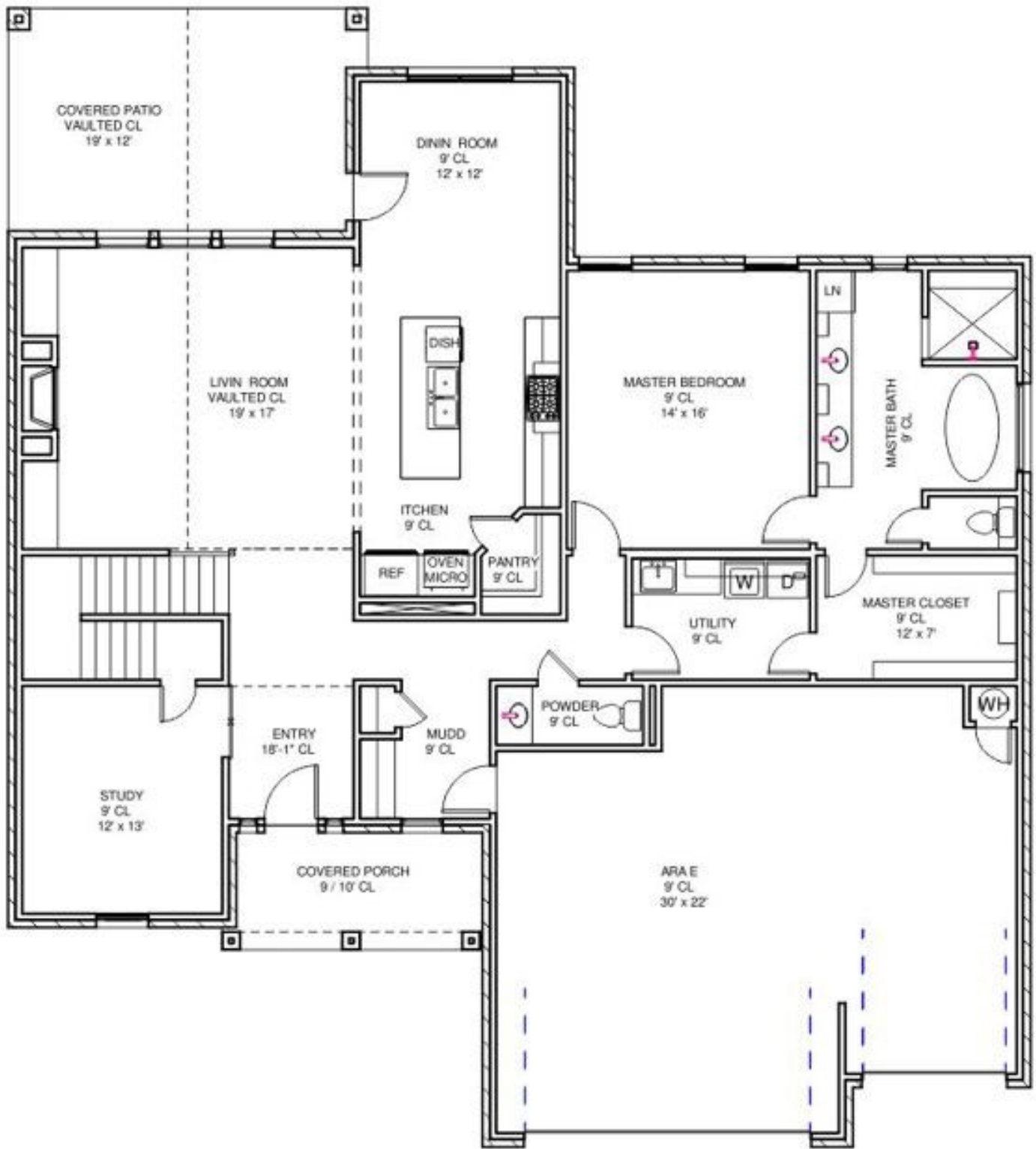


3 CAR

For more information about this plan or other options

CONTACT 405.310.6656

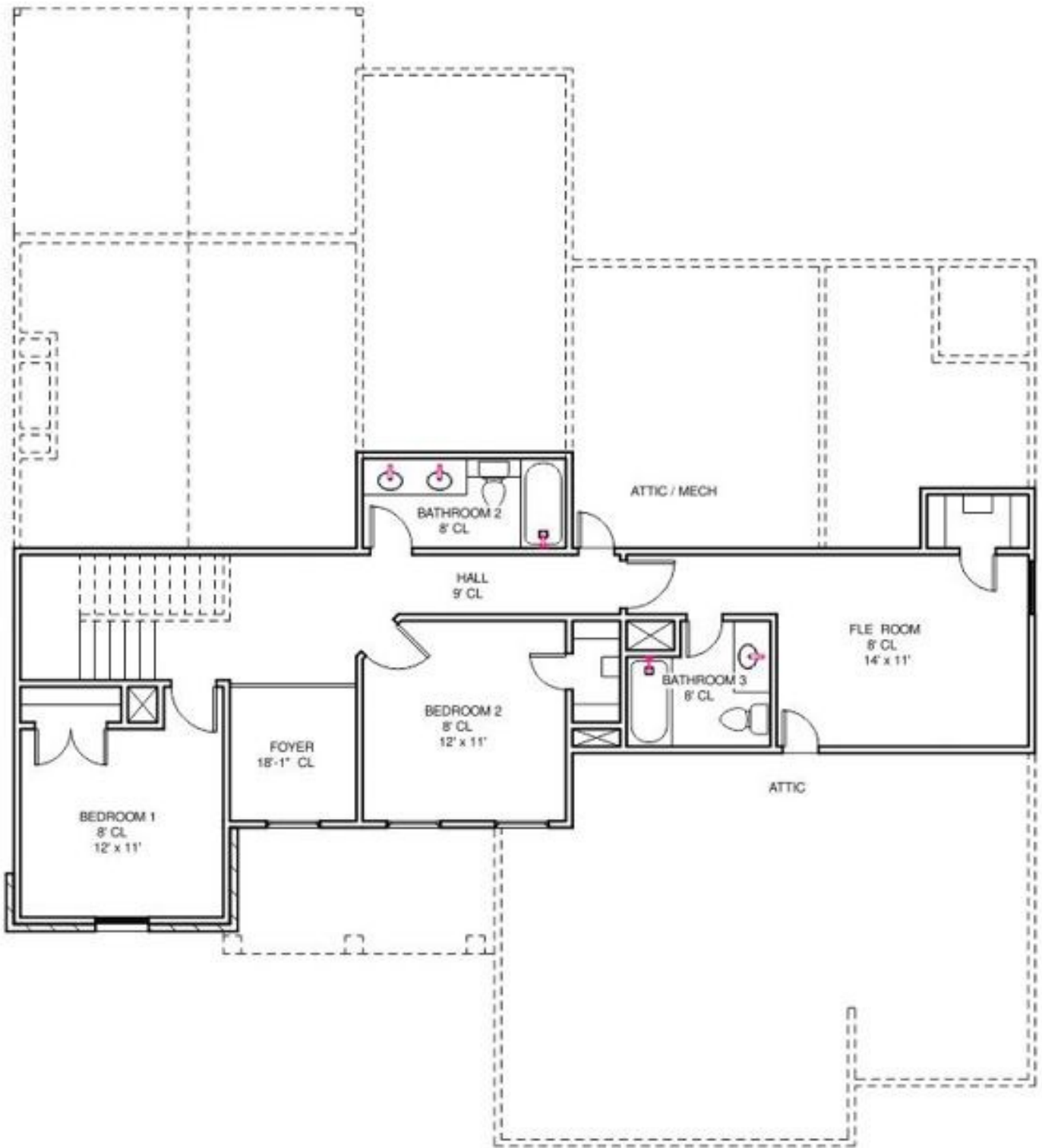




Total Living - 3,088 SQFT Outdoor Living - 420 SQFT Length - 64' - 0"
 Indoor Living - 2,668 SQFT Garage - 450 SQFT Width - 57' - 6"

Plans, specifications, features, and elevations are subjected to change. All dimensions and square footages are approximated. Plans are property of Brookfield Custom Homes LLC, reuse of plan is strictly prohibited.

SALES@BROOKFIELDCUSTOMHOMES.COM / WWW.BROOKFIELDCUSTOMHOMES.COM



Total Living - 3,088 SQFT

Outdoor Living - 420 SQFT

Length - 64' - 0"

Indoor Living - 2,668 SQFT

Garage - 450 SQFT

Width - 57' - 6"

Plans, specifications, features, and elevations are subjected to change. All dimensions and square footages are approximated. Plans are property of Brookfield Custom Homes LLC, reuse of plan is strictly prohibited.

SALES@BROOKFIELDCUSTOMHOMES.COM / WWW.BROOKFIELDCUSTOMHOMES.COM